

# Craftsman Series Non-Tapered Column Installation Instructions

Warning: the precision machined edges of Poly-Classic Craftsman column components can be extremely sharp. **Use of appropriate personal protection equipment is required:** wear gloves when handling the product, wear a dust mask when cutting the product, and always wear eye protection.

Use of polyurethane adhesive, such as Gorilla Glue<sup>®</sup>, Loctite<sup>®</sup> PL Premium<sup>®</sup> Adhesive, Christy's<sup>™</sup> Clear PVC Pipe Cement (or other clear PVC cement), or similar products is recommended. Always observe adhesive manufacturer's instructions.

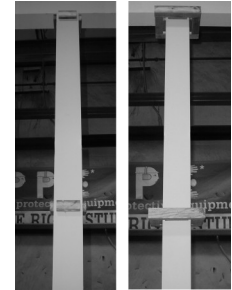
Assembly is easiest with pneumatic or electric pin-nailers. These should recess the head of the pin nails far enough that only a minor touch-up is necessary (touch-up with caulk prior to painting.)



1) Measure overall opening from floor to beam or soffit (must have structural pressure-treated post or lally column for load support.)



2) Install blocking around load bearing post (use pressure treated lumber.) Final width of blocking must be same width as inside of column.



3) Install blocking around center and top of post to match step 2 (center blocking is optional.) Blocking may be attached to deck/soffit instead of post if necessary.



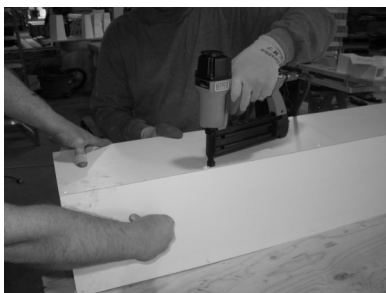
4) Trim shaft pieces at least 1/4" shorter than opening height (from step 1). Trim ONLY from the bottom—top end is marked.



5) Lay 3 panels flat and apply adhesive to center joints.



6) Assemble three panels, using E-Z Lock joints.



7) Using finish nails, assemble three panels together. Observe E-Z Lock diagram on reverse to determine correct nail placement.



8) Place the partially assembled (three panels) column around post and blocking.



9) Apply adhesive to fourth panel and attach to shaft using E-Z Lock joints. Pin-nail in place.



10) Screw or nail column to blocking **ONLY ON THE BOTTOM**. Do not attach at center or top (to allow for expansion).



11) Apply adhesive to mitered edges of base moulding (standard base is 9 1/4" tall) and assemble around bottom of column shaft.



12) Fasten joints on base with pin-nails.



13) The **TOP** of the shaft should **NOT** be fastened to the blocking, and there should be at least 1/4" gap to allow expansion (see step 4).



14) There are **TWO** methods of attaching the cap. First, apply adhesive to mitered edges of cap moulding (7 1/4" tall) and assemble around shaft and pin-nail joints.



15) Option 1: Attach cap to soffit with construction adhesive and toe-nail to soffit. **DO NOT ATTACH** cap to column shaft if the cap is flush with soffit (to allow expansion).\*



16) Option 2: Leave 1/4" expansion room above cap, and pin-nail the cap to the column. Be sure the pin-nails **DO NOT** reach the blocking inside!\*

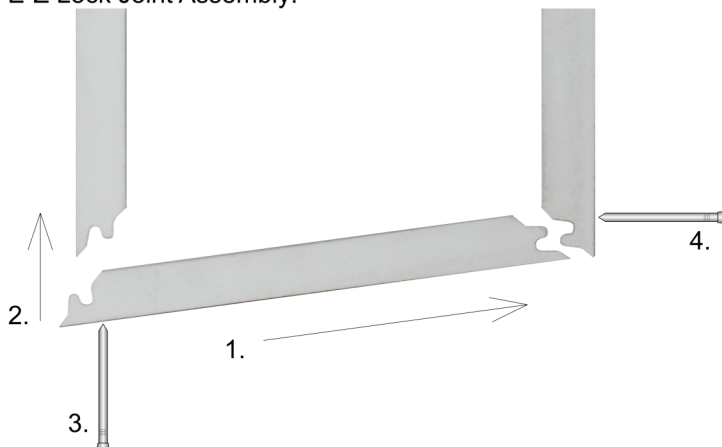


17) Caulk edges of base, cap, and nail holes.



18) Clean surface of column with cleaner recommended by the paint manufacturer. Paint with 2 coats of acrylic latex paint.

#### E-Z Lock Joint Assembly:



Please note the correct assembly of the E-Z Lock joint shown at the left. Nails **MUST** be installed only in the edges shown (3 and 4). Installing on the other edges may result in open seams.

- 1) Glue both joint edges; slide first joint together
- 2) Push second joint closed
- 3) Nail this joint first
- 4) Nail this joint second

#### Notes:

Panels are marked "TOP" — trim from the bottom only. Cap and base pieces are also marked as "CAP" or "BASE". Only use non-corrosive fasteners — galvanized, stainless steel, etc. Always follow glue and paint manufacturer's instructions.

\*Column must not be allowed to collect water, debris, etc. If the top of the column extends beyond the soffit/beam, the cap must be flashed with lead, copper, aluminum, etc. to prevent entry of water or foreign materials.