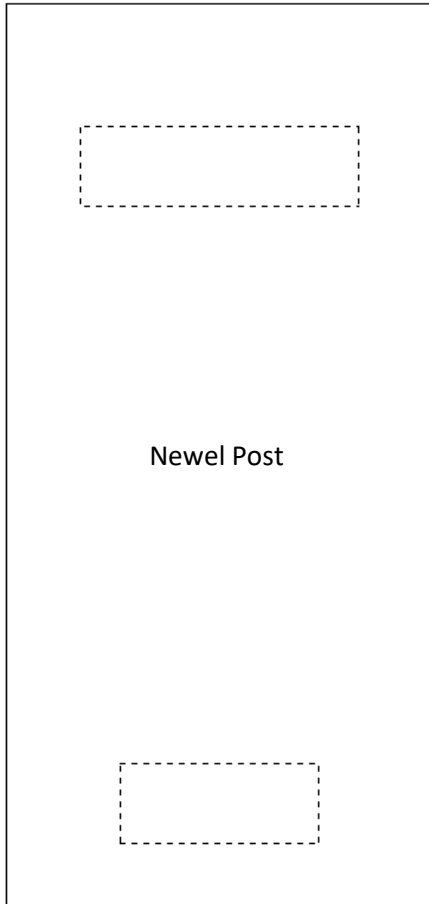
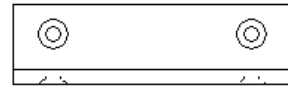


Front View



Newel Post

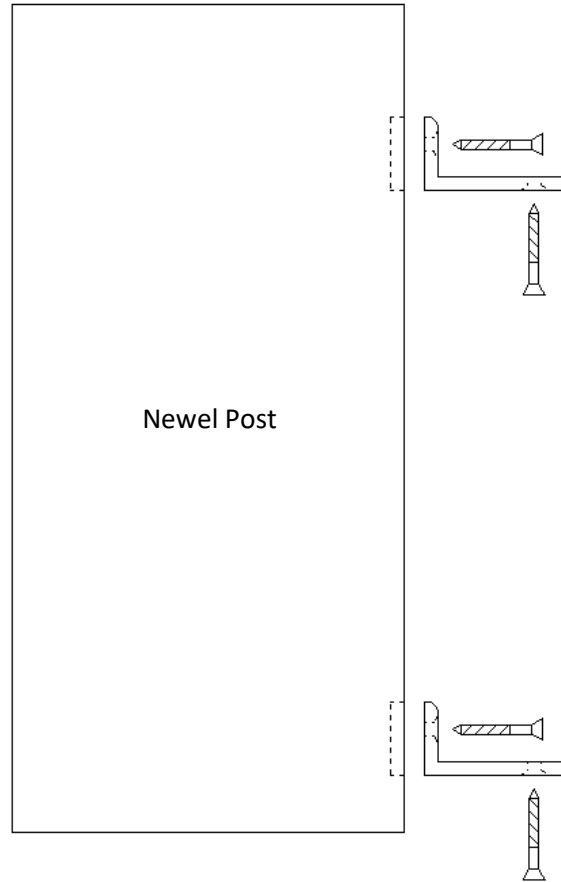


Dotted line represents mortised section on the newel post for the bracket to sit.

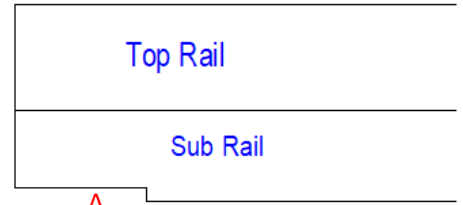
Note: The mortising and rabbeting of the newel and rail does not have to be done, but by doing this the brackets will become less visible after installation.



Side View



Newel Post

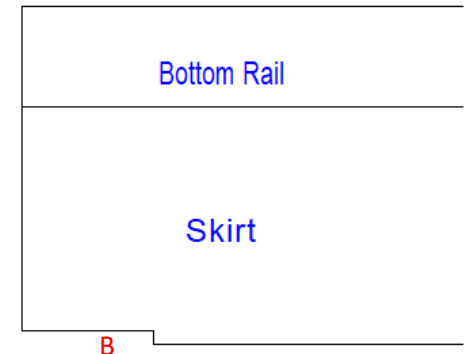


Top Rail

Sub Rail

A

Note: Rabbeted sections of the sub rail and skirt are denoted as A and B. This does not have to be done but it will make the bracket less visible after installation



Bottom Rail

Skirt

B

General Notes: Assembly is the same for the 4" system apart from there being 4 of the shorter brackets.

For bracket dimensions please refer to PDF [RIK Brackets](#)

All custom manufactured and/or modified standard product are non-refundable



310 6th STREET
TOWNSEND, MT 59644
PHONE: (888) 459-9965

GENERAL NOTES:

1. All products are drawn for presentation purpose only therefore image may vary slightly from actual image part.
2. American Porch, LLC reserves the right to change any product design at any time without notification.
3. American Porch, LLC makes no guarantee of suitability on any specific application. Choice of dimensions, quantities, and designs are the sole responsibility of the customer.

PRODUCT NAME:

Rail Installation Kit

PRODUCT #:

RIK.6

PRODUCT DESCRIPTION:

6" Rail Installation Kit