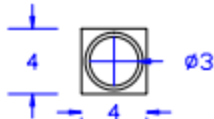
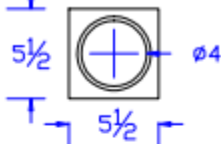


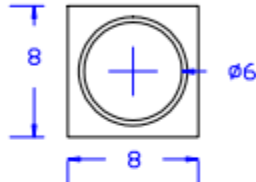
NP 300-4



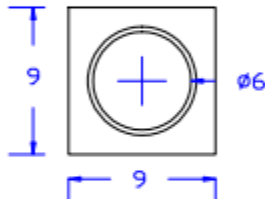
NP 300-6



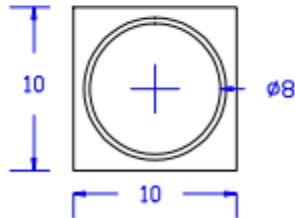
NP 300-8



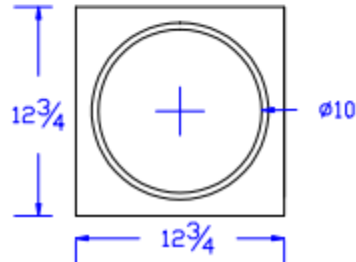
NP 300-9



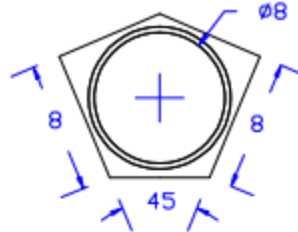
NP 300-10



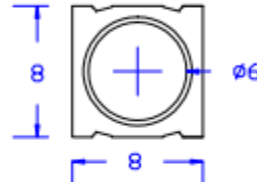
NP 300-12



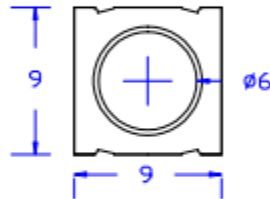
APNP 310-8



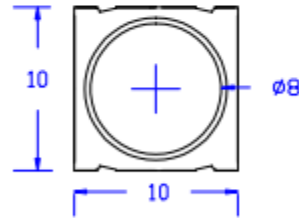
PNP 301-8  
CNP 302-8  
SNP 303-8



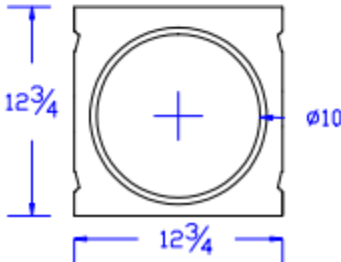
PNP 301-9  
CNP 302-9  
SNP 303-9



PNP 301-10  
CNP 302-10  
SNP 303-10



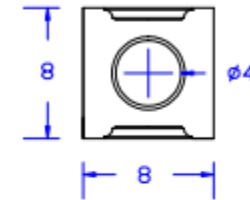
PNP 301-12  
CNP 302-12  
SNP 303-12



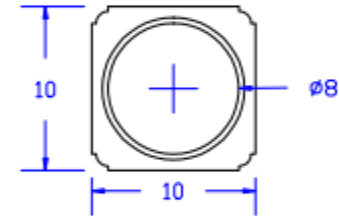
ALL NEWEL POST PIPES ARE DIMENSIONED WITH INSIDE DIAMETERS

PIPE IS SCHEDULE 40 PVC

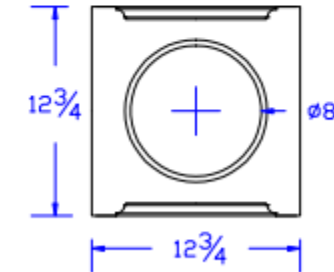
PNP 307-8  
CNP 308-8  
SNP 309-8



NP 304-10



PNP 307-12  
CNP 308-12  
SNP 309-12



**SECTION 01**  
SCALE: 1" = 1'-0"



310 6<sup>TH</sup> STREET  
TOWNSEND, MT 59644  
PHONE: (888) 459-9965

**GENERAL NOTES:**

1. All products are drawn for presentation purpose only therefore image may vary slightly from actual image part.
2. Western Spindle, LLC reserves the right to change any product design at any time without notification.
3. Western Spindle, LLC makes no guarantee of suitability on any specific application. Choice of dimensions, quantities, and designs are the sole responsibility of the customer.

**PRODUCT NAME:**

Pipe Diameters for Poly

**PRODUCT #:**

**PRODUCT DESCRIPTION:**